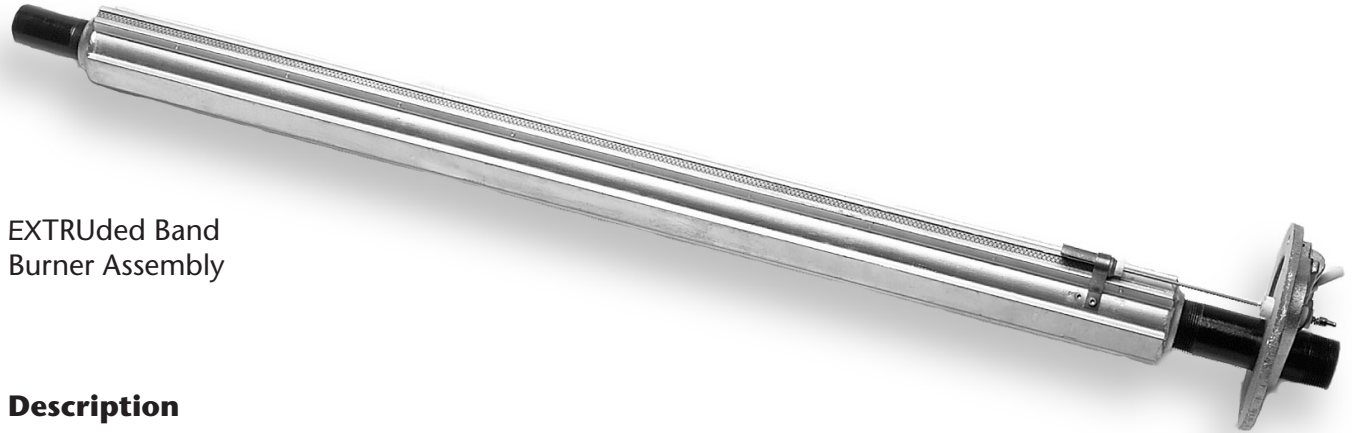


EXTRUded Band Burner Assembly

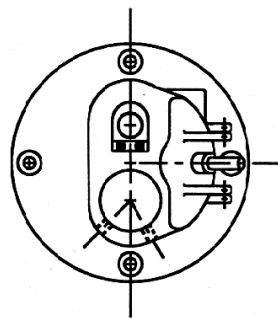
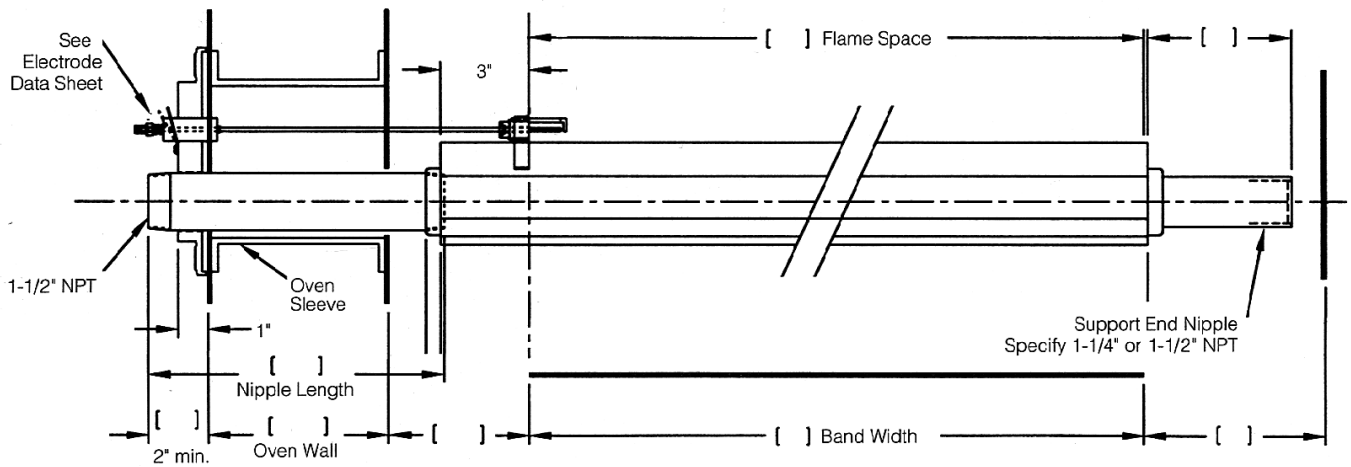


EXTRUded Band Burner Assembly

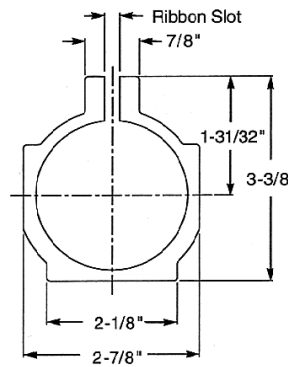
Description

The EXTRUded Band Burner Assembly, with a larger cross section and smooth walls, is designed to minimize pressure drops offering superior uniformity, higher capacity, and good turn-down.

- Turn down to 200 BTU/inch of flame space.
- Interchangeable with existing cast iron band burners
- Suitable for use with natural gas, propane and butane.



See Burner Plate Data Sheet



End View