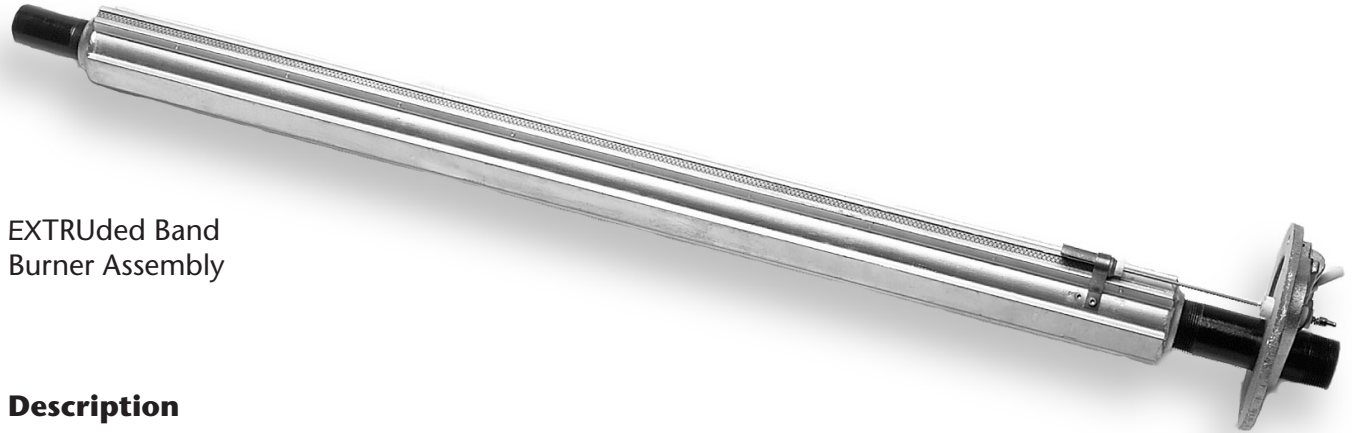


# EXTRUded Band Burner Assembly

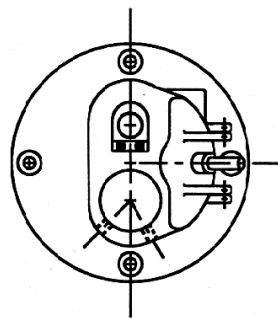
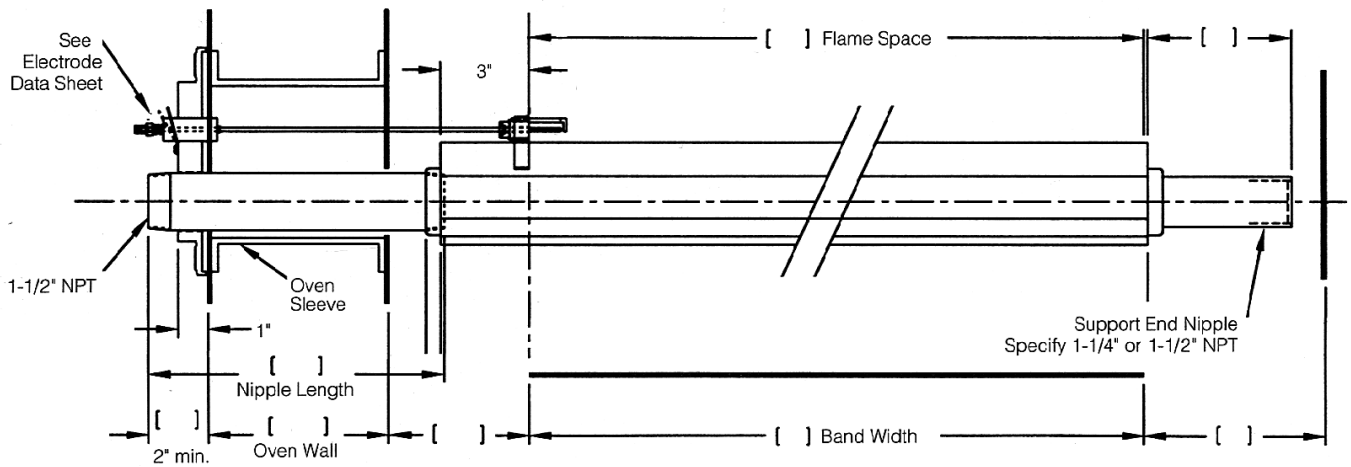


EXTRUded Band Burner Assembly

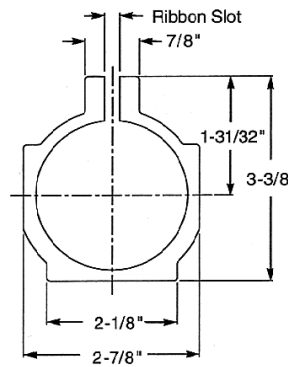
## Description

The EXTRUded Band Burner Assembly, with a larger cross section and smooth walls, is designed to minimize pressure drops offering superior uniformity, higher capacity, and good turn-down.

- Turn down to 200 BTU/inch of flame space.
- Interchangeable with existing cast iron band burners
- Suitable for use with natural gas, propane and butane.

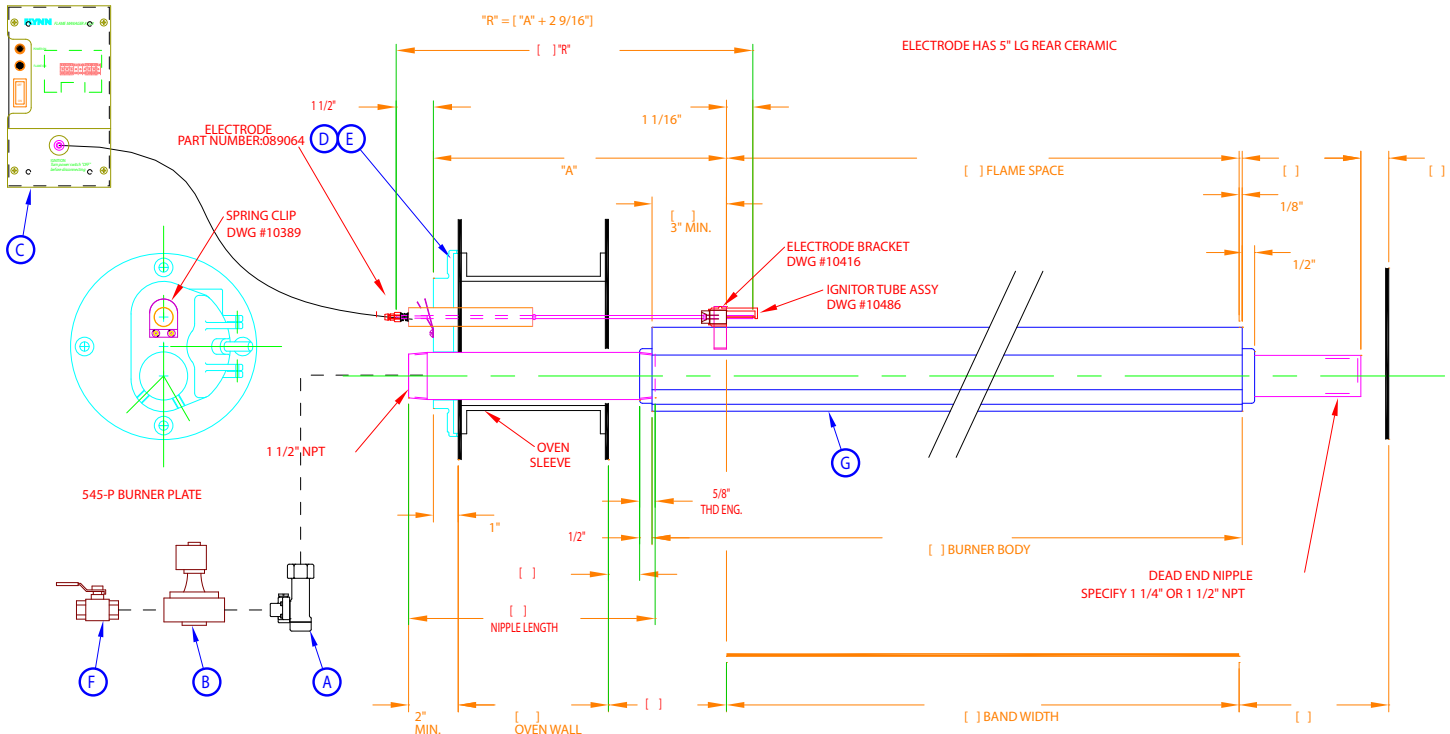


See Burner Plate Data Sheet

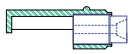


End View

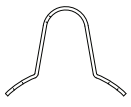
# EXTRUDED BAND BURNER Assembly



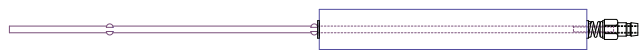
PART NUMBER	
A	093010 MIXER
B	178361 VALVE SOLENOID 3/8"
C	090800 FLAME MANAGER AL120
D	096540/1 BURNER PLATE--RIGHT/LEFT HAND
E	119750 GASKET
F	110800 MANUAL GAS COCK
G	006122 EXTRUDED BURNER



IGNITOR TUBE  
PART No. 300937  
DRAWING #10486



IGNITOR TUBE MTG BRACKET  
PART No. 085261  
DRAWING #10416



ELECTRODE (1 3/4 LG CERAMIC)  
PART No. 089060  
DRAWING #10356



ELECTRODE (5 LG CERAMIC)  
PART No. 089064  
DRAWING #10889

ELECTRODE COMPONENTS  
FOR  
XTRUDED BAND BURNER