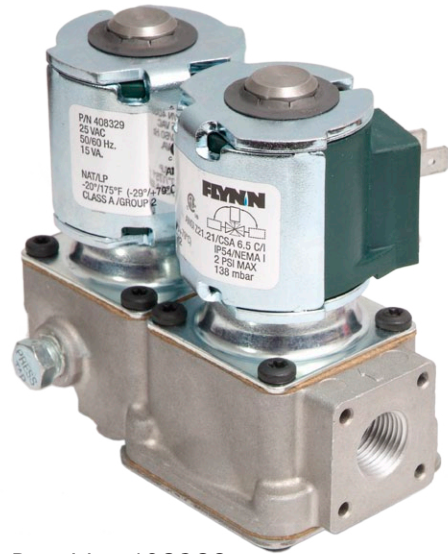


## Dual Solenoid Gas Valve



Part No. 408328



Part No. 408329

### Description

The Flynn Dual Solenoid Gas Valve is a dual operator automatic gas valve.

The Flynn Dual Solenoid Gas Valve can be used with natural gas and LP gas, at pressures up to 2 PSIG.

### Specifications

3/8" & 1/2" NPT/BSPP

Maximum inlet pressure is 2 PSIG

Permissible ambient (surface) temperature is -20 to 175°F (-29 to 79°C)

25 VAC, 120 VAC, 240 VAC

### Agency Listing

UL Approved

CSA (AA/CGA) Certificate Number 23226265

EC Type Examination Certificate Number EC-86/10/062/M16

### Other

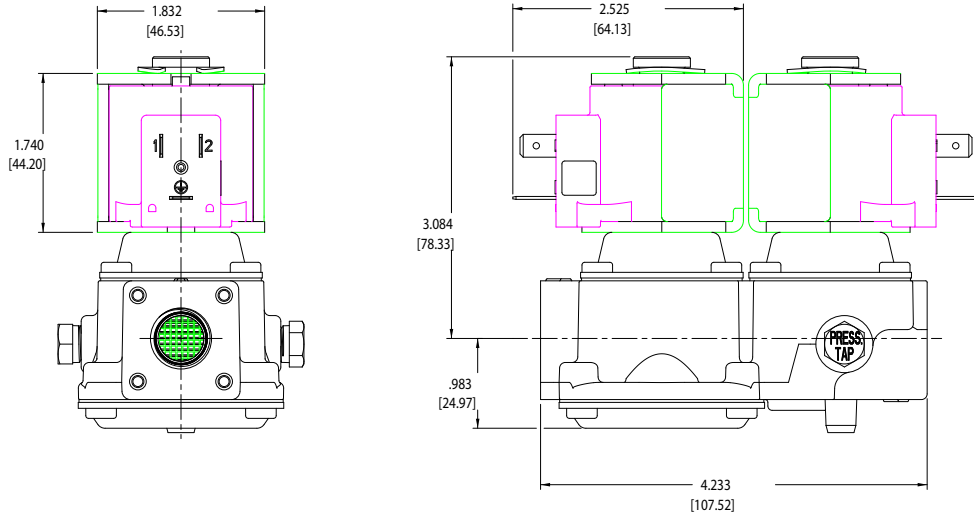
Meets dual solenoid valve requirement of NFPA 86 for inputs ≤ 150,000 BTU/HR & Canadian Standard CAN I-6.5

### Selection Chart

Part Number	Inlet & Outlet	VAC (50/60 Hz)
408 329	3/8" x 3/8" NPT/BSPP	25 V
408 328	3/8" x 3/8" NPT/BSPP	120 V
408 311	3/8" x 3/8" NPT/BSPP	240 V
408 321	1/2" x 1/2" NPT/BSPP	25 V
408 040	1/2" x 1/2" NPT/BSPP	120 V
408 313	1/2" x 1/2" NPT/BSPP	240 V

# Dual Solenoid Gas Valve

Dimensions  
Part No. 408328



## Technical Specifications

Types of Gas	2nd (Natural Gas), and 3rd (LP Gas) Family Gases
Permissible Ambient (Surface) Temperature	-20 to 175°F (-29 to 79°C)
Electrical Ratings	25 VAC, 50/60 Hz, 0.595A 120 VAC, 50/60 Hz, 0.13A 240 VAC, 50/60 Hz, 0.063A
Maximum Operating Pressure	North America: 2 ps i Europe: 138 mbar
Reverse Pressure Ratings	150 mbar (15 kPa) (60 in. W.C.); Class A (EN 161)
Inlet Pipe Size	3/8 in. NPT or 1/2 in. NPT, 3/8 BSPP or 1/2 BSPP
Outlet Pipe Size	3/8 in. NPT or 1/2 in. NPT, 3/8 BSPP or 1/2 BSPP
Valve Torsion Group	Group 2 (EN 161)
Pressure Connection	1/8 in. NPT or M5 x 0.8 thread bottom
Dirt Strainer	0.9 mm (0.035 in.) Mesh
Operating Time Rating	100% Continuous
Valve Timings Power Rating	Closing Time: ≤ 1 Second Opening Time: ≤ 1 Second Dead Time: < 1 Second
Power Rating	15 VA per Coil
Agency Listings	UL Listed CSA Certificate Number 23226265 EC Type Examination Certificate Number EC-86/10/062/M16
Specification Standards	EN 161 Standards Complying with the EMC Directive Standards Complying with the Low Voltage Directive ANSI Standards Z21.21 Canadian Standard CSA 6.5 EC Certificate EC-86/10/062/M16

## Dual Solenoid Gas Valve

### Dual Valve Requirement of the 2007 edition of NFPA 86 Standards - *Ovens & Furnaces*- Section 8.7.2, 8.7.2.1 and A.8.7.2

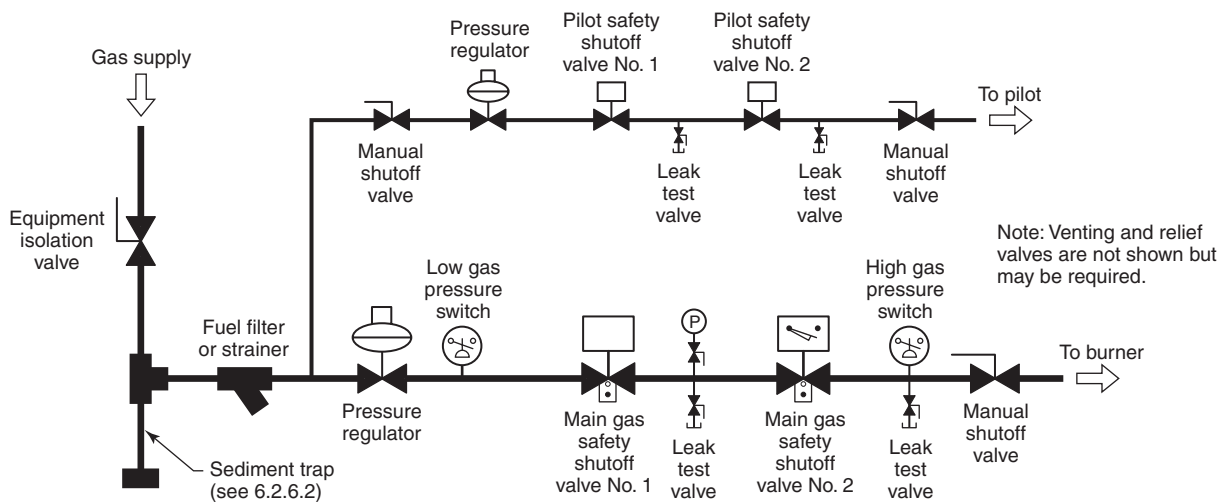
#### 8.7.2\* Fuel Gas Safety Shutoff Valves.

8.7.2.1 Each main and pilot fuel gas burner system shall be separately equipped with either of the following:

- (1) Two safety shutoff valves piped in series
- (2) For radiant tube-fired burner systems only, a single safety shutoff valve where either of the following conditions is satisfied:
  - (a) The tubes are of metal construction and open at one or both ends with heat recovery systems, if used, that are of explosion-resistant construction.
  - (b) The entire radiant tube heating system, including any associated heat recovery system, is of explosion-resistant construction.

A.8.7.2 See Figure A.8.7.2.

Key	Safety shutoff valve requirements		
Safety shutoff valve	Under 150,000 Btu/hr	150,000 to 400,000 Btu/hr	Over 400,000 Btu/hr
Safety shutoff valve with visual identification			
Safety shutoff valve with visual identification and proof of closure			



**FIGURE A.8.7.2 Typical Piping Arrangement Showing Fuel Gas Safety Shutoff Valves.**

Reproduced with permission from NFPA 86, *Ovens & Furnaces*, Copyright© 2007, National Fire Protection Association. This reprinted material is not the complete and official position of the NFPA on the referenced subject, which is represented only by the standard in its entirety.