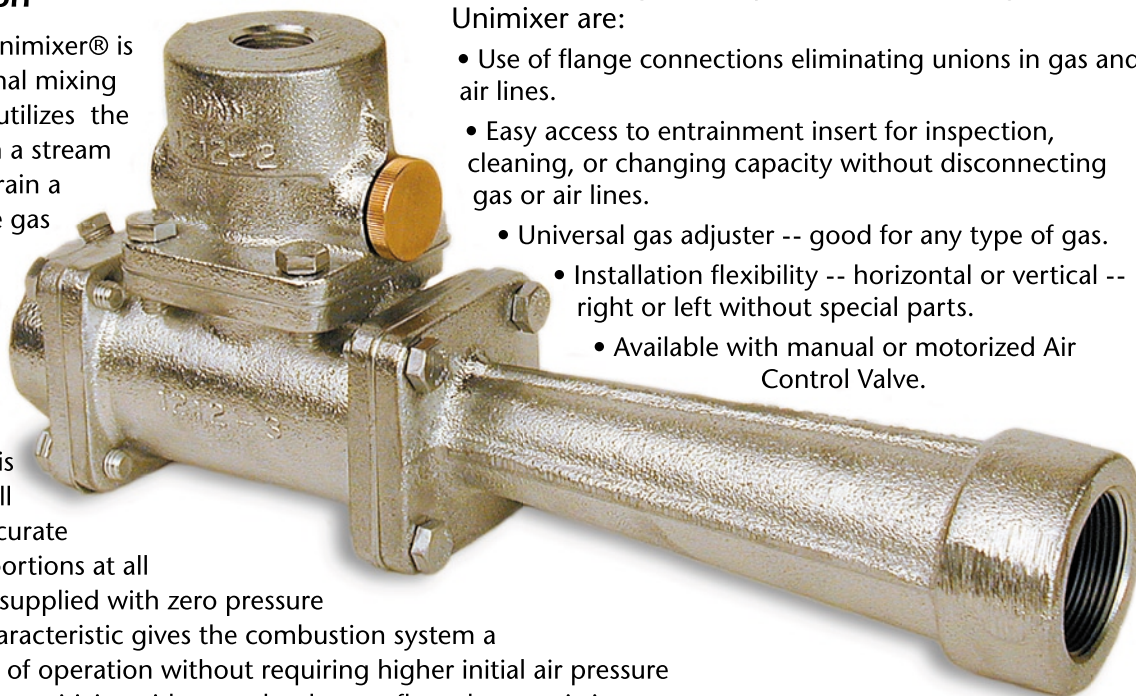


Unimixer®

AM923B1

Description

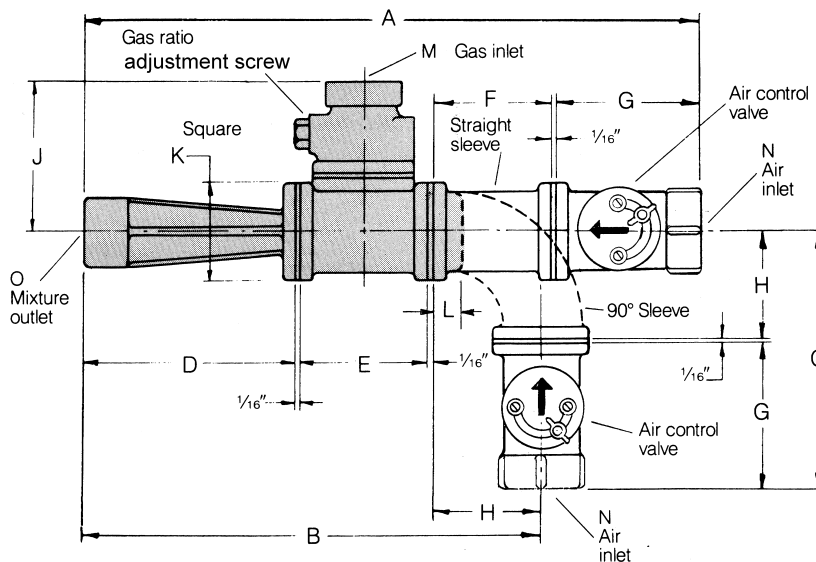
The Flynn Unimixer® is a proportional mixing device that utilizes the energy from a stream of air to entrain a combustible gas and delivers the mixture to the burners. Because of refinements in design this Unimixer will maintain accurate gas-air proportions at all flows when supplied with zero pressure gas. This characteristic gives the combustion system a wider range of operation without requiring higher initial air pressure and reduces sensitivity with regard to burner flow characteristics.



Some Advantages Incorporated in the Design of the Unimixer are:

- Use of flange connections eliminating unions in gas and air lines.
- Easy access to entrainment insert for inspection, cleaning, or changing capacity without disconnecting gas or air lines.
- Universal gas adjuster -- good for any type of gas.
- Installation flexibility -- horizontal or vertical -- right or left without special parts.
- Available with manual or motorized Air Control Valve.

Dimensions



Dimensions in inches

DP No.	Mixer	A	B	C	D	E	F	G	H	J	K	L	M Gas Inlet	N Air Inlet	O Mixture Outlet
093500	88	14-3/16	10-1/2	5-15/16	4-7/8	3	2-3/4	3-3/8	2-1/2	3-1/2	2-5/16	11/16	3/4	1	1
094000	810	16-15/16	13-1/4	6-3/16	7-5/8	3	2-3/4	3-3/8	2-1/2	3-1/2	2-5/16	11/16	3/4	1	1-1/4
094500	1212	21-15/16	16-7/8	7-9/16	8-1/4	4-1/2	5-1/2	3-1/2	4	4-5/16	3	3/4	3/4	1-1/2	1-1/2
095000	1616	25-3/8	20-1/8	8-3/4	9-7/8	5-1/8	6-1/2	3-11/16	5-7/16	3-7/8	3-7/16	1	1	2	2
095500	2420	32-1/16	26-1/8	10-7/16	14	6	7-1/2	4-3/8	6	6-9/16	4-3/8	1-1/2	1-1/2	3	3

Unimixer®

AM923B2

Capacities at Various Pressures BTU/hr x 1000

Unimixer No.	2 oz.	4 oz.	8 oz.	10 oz.	12 oz.	16 oz.	20 oz.	24 oz.	28 oz.	32 oz.
88-10	25	39	54	63	68	75	82	87	89	94
88-11	31	46	67	74	78	90	99	105	108	114
88-12	47	68	97	108	118	130	140	151	157	164
88-13	58	75	108	118	126	140	154	165	172	183
88-14	75	82	114	126	130	151	164	180	189	210
88-15	85	92	126	140	151	172	189	210	222	236
88-16	95	116	150	171	180	200	225	240	257	277
88-17	102	135	180	199	222	252	270	291	315	344
810-10	26	40	60	70	77	90	102	114	125	138
810-11	35	51	73	81	85	110	125	138	152	160
810-12	49	70	100	110	122	135	150	165	180	190
810-13	60	76	110	120	135	145	164	180	195	210
810-14	76	85	120	136	155	175	195	208	220	235
810-15	86	100	151	173	190	220	240	256	270	280
810-16	96	125	185	210	230	260	285	308	325	333
810-17	104	160	230	252	275	305	330	357	380	400
1212-18	100	145	200	220	235	265	290	320	345	372
1212-19	125	172	235	255	275	305	340	375	405	437
1212-20	150	200	261	285	310	345	385	425	462	500
1212-21	170	220	293	316	340	383	430	470	516	560
1212-22	190	245	320	350	378	430	480	530	580	630
1212-23	210	265	343	375	410	470	540	600	665	730
1212-24	225	290	380	420	460	535	612	690	770	840
1212-25	280	340	445	490	530	603	680	750	825	900
1616-24	214	303	429	479	525	606	678	742	802	857
1616-25	233	329	465	520	570	658	735	805	870	930
1616-26	251	356	503	562	616	711	795	871	941	1006
1616-27	271	384	542	606	664	767	858	939	1015	1085
1616-28	292	412	583	652	714	825	922	1010	1091	1167
1616-29	313	442	626	700	766	885	989	1084	1171	1251
1616-30	335	474	670	749	820	947	1059	1160	1253	1339
1616-31	358	506	715	799	876	1011	1131	1238	1338	1430
1616-32	381	539	762	852	933	1077	1205	1320	1425	1524
1616-33	405	573	810	906	992	1146	1281	1403	1516	1621
2420-32	400	566	800	894	980	1131	1265	1386	1497	1600
2420-33	425	602	851	951	1042	1203	1345	1474	1592	1702
2420-34	452	639	903	1010	1106	1277	1428	1564	1690	1806
2420-35	479	677	957	1070	1172	1353	1513	1658	1790	1914
2420-36	506	716	1012	1132	1240	1432	1601	1754	1894	2025
2420-37	535	756	1070	1196	1310	1513	1691	1852	2001	2139
2420-38	564	798	1128	1261	1382	1595	1784	1954	2111	2256
2420-39	594	840	1188	1329	1455	1680	1879	2058	2223	2377
2420-40	625	884	1250	1398	1531	1768	1968	2165	2339	2500

!! Last Two Digits of Unimixer No. Denotes Air Jet Size